

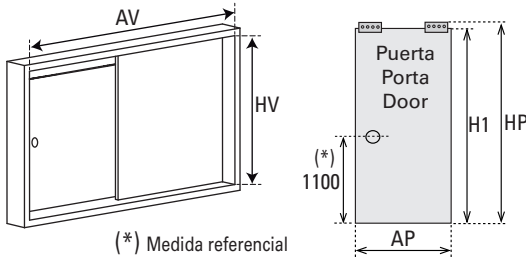
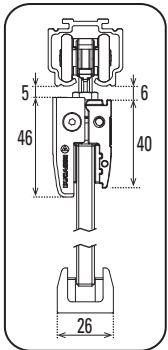
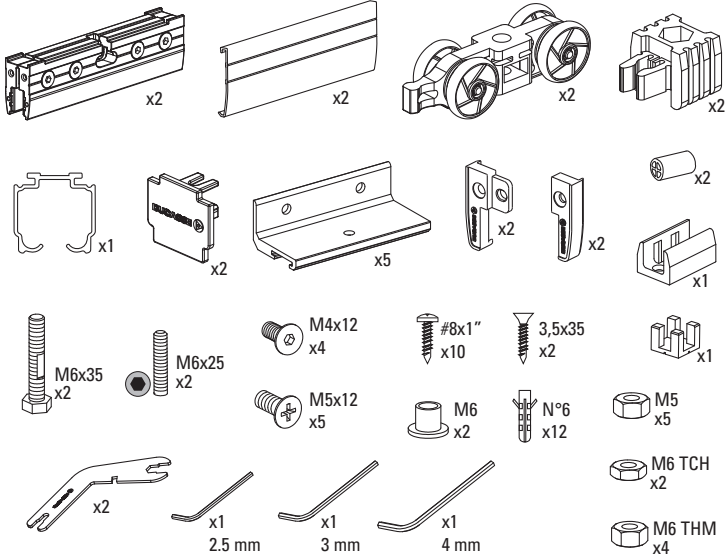
Kit corredera puerta Vidrio 50 kg

Kit para 1 hoja

Vidrio templado
Tempered glass
Vidro temperado

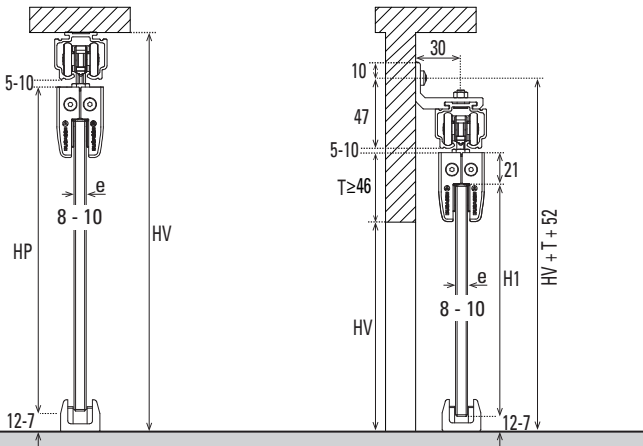
1x 15-50kg 33-110lbs	1	8-10mm 5/16"-3/8"	500-1000	34 30
Peso puerta Peso porta Door weight	Una puerta Uma porta One door	Espesor Vidrio Espessura Vidro Glass Thickness	Ancho puerta Largura porta Door width	Riel U45 Trilho U45 Track U45

COMPONENTES / COMPONENTES / COMPONENTS



DN-50 VD
Riel U45
Trilho U45
Track U45

DN-50 VD
Conector muro ancho
Conector de parede largo
Lateral bracket wide

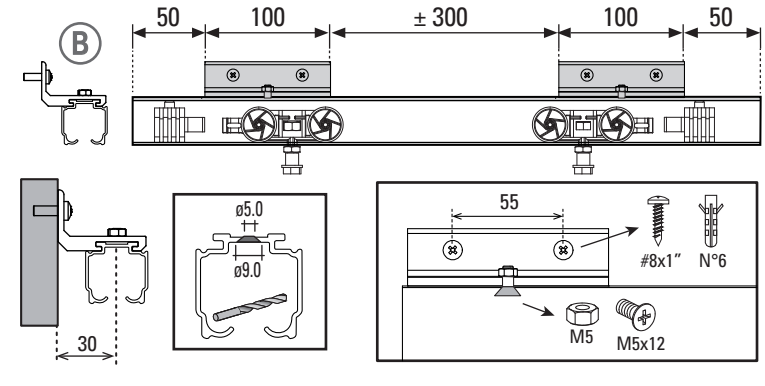
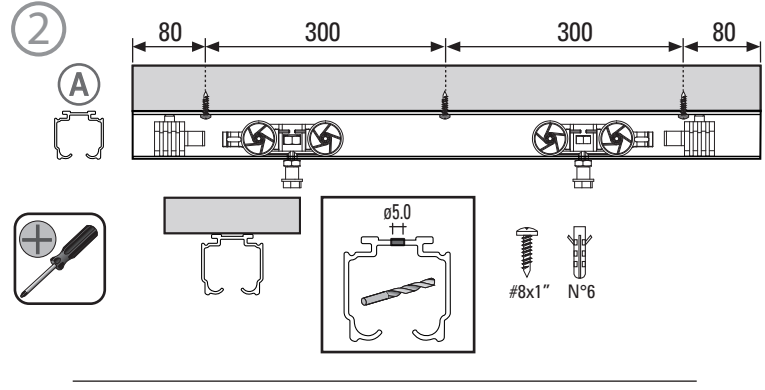
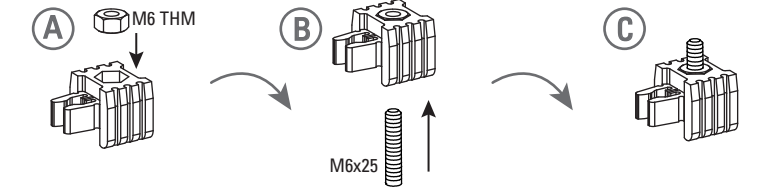
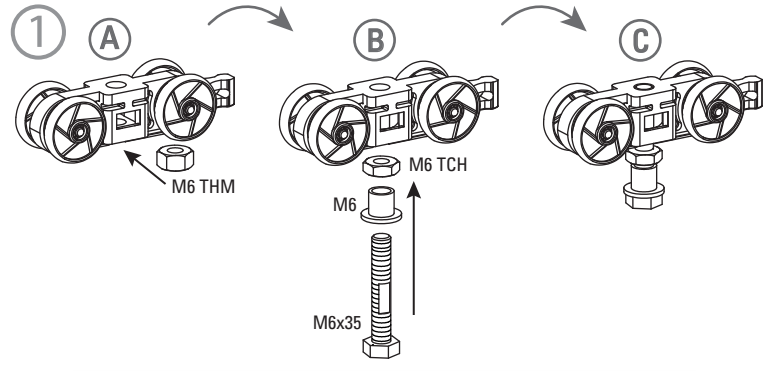


$HP = HV - 48$

$H1 = HV - 69$

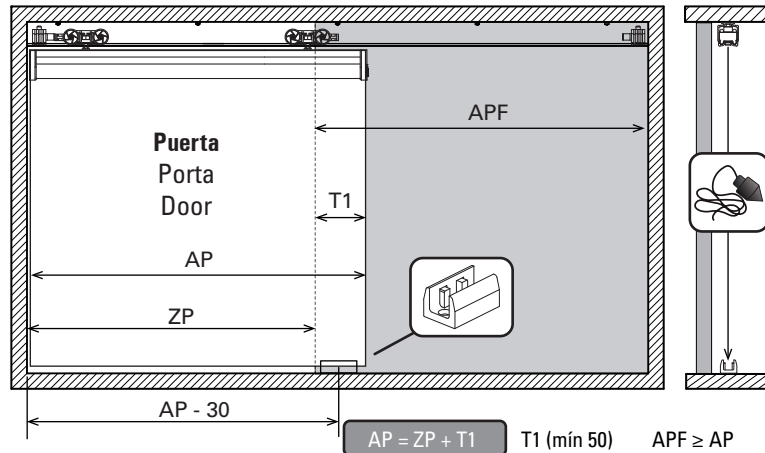
$HP = (HV+T) - 12$

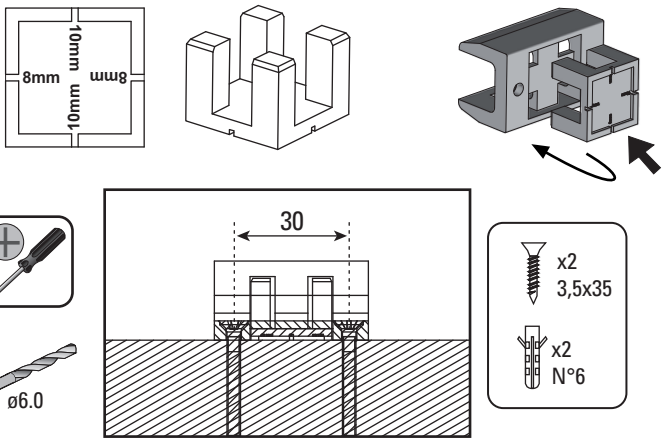
$H1 = (HV+T) - 33$



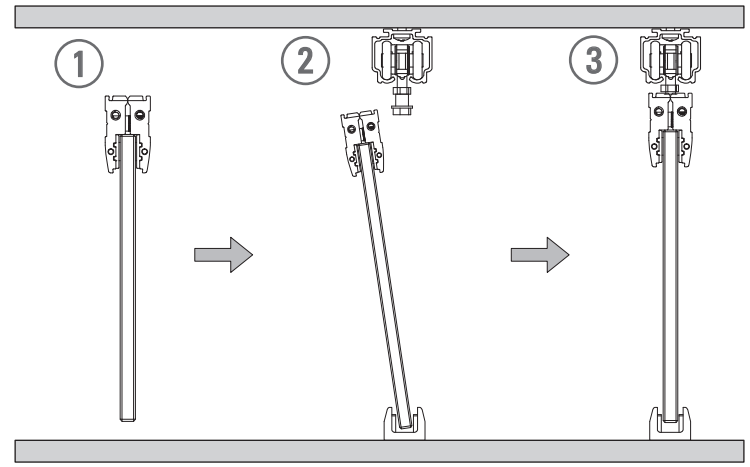
! (A) Limpiar el riel
Limpar o trilho
(B) Clean the carrier track

3 Puerta + paño fijo / Porta + painel fixo / Fixed panel + door





4.1



4 Mecanizado / Usinagem / Machining

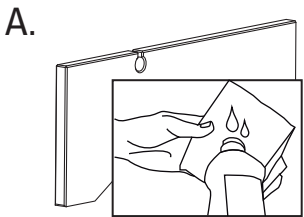
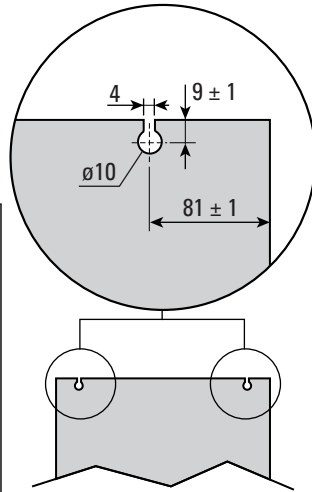


- Utilizar con cristal templado.
- Use with tempered glass.
- Usar com vidro temperado.

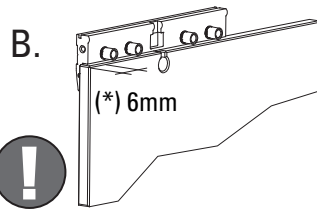
- Es requisito perforar el cristal para la instalación del sistema en zonas de mucha humedad y calor.

- É requerido fazer os furos no vidro para a instalação do sistema em áreas de elevada humidade e calor.

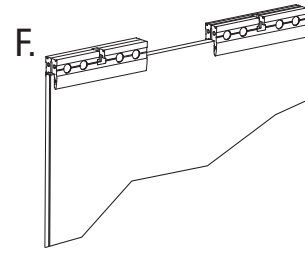
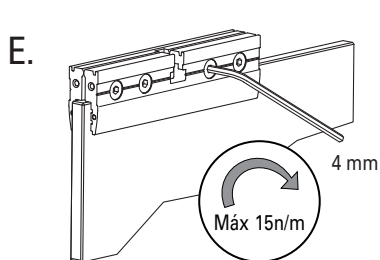
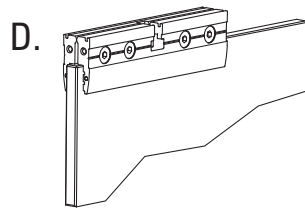
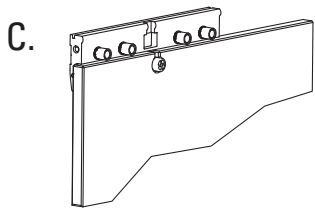
- It is required to make the holes system for installation in areas of high humidity and heat.



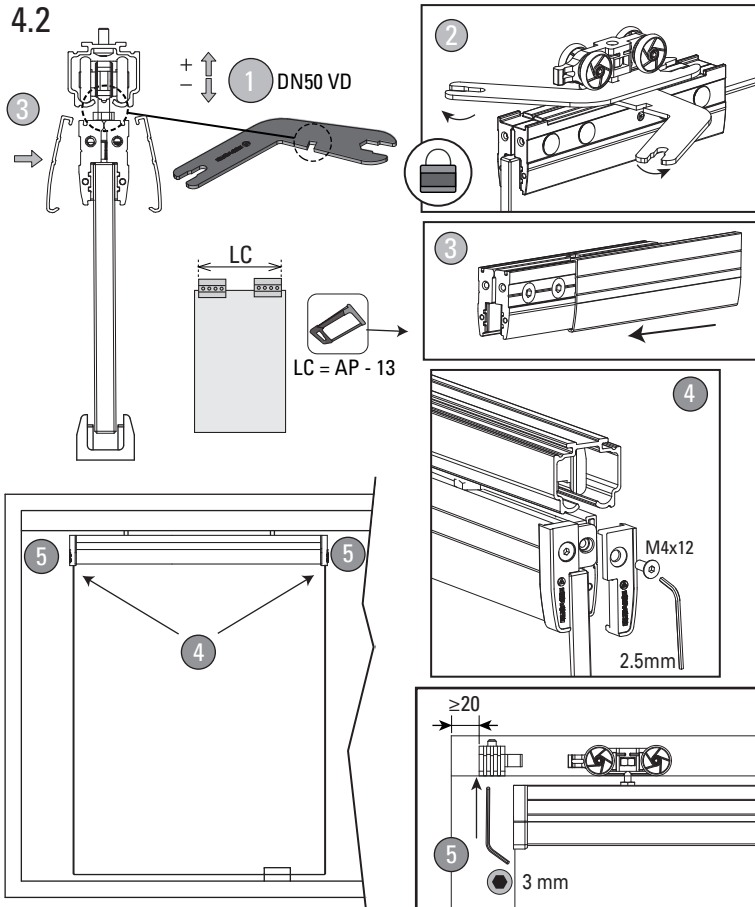
Limpiar con alcohol.
Limpe com álcool.
Clean with alcohol.



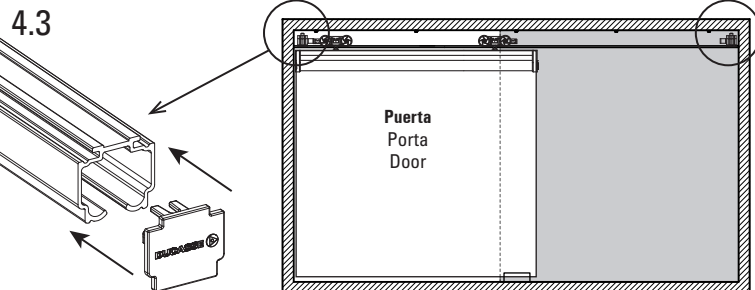
(*) Con o sin cristal perforado.
With or without perforated glass.
Com ou sem vidro perforado.



4.2



4.3



Todas las medidas expresadas en milímetros
Todas as medidas estão em milímetros.
All measurements in millimeters.

mm	Decimal inches	Aprox Fraction	mm	Decimal inches	Aprox Fraction
1	0.0394	3/64	6	0.2362	15/64
2	0.0787	5/64	7	0.2756	9/32
3	0.1181	1/8	8	0.3150	5/16
4	0.1575	5/32	9	0.3543	23/64
5	0.1969	13/64	10	0.3937	25/64