

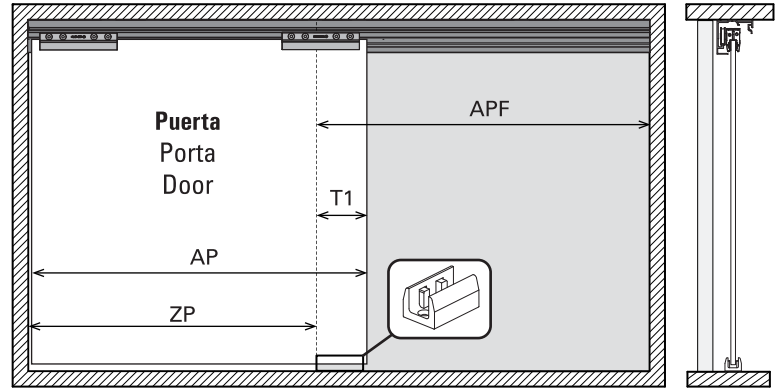
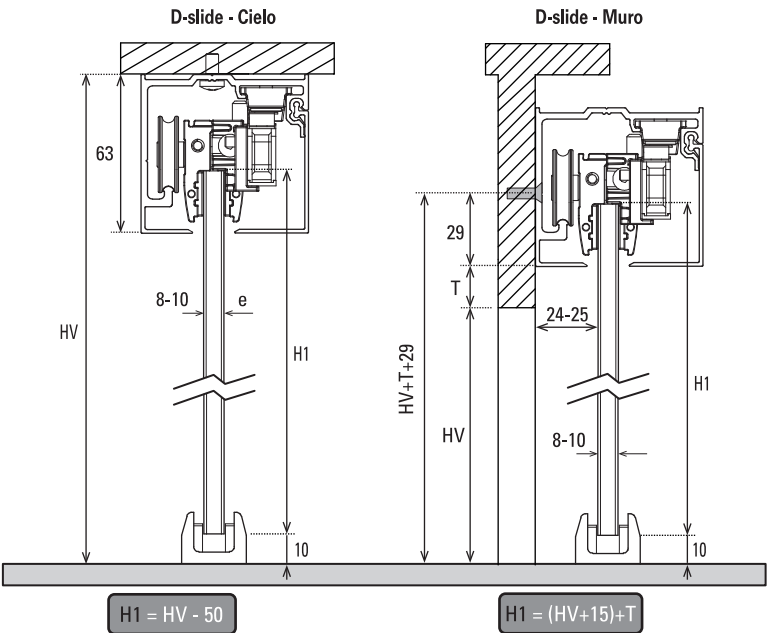
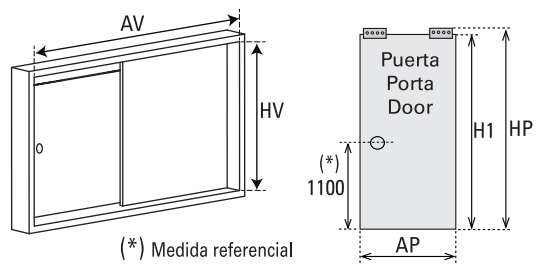
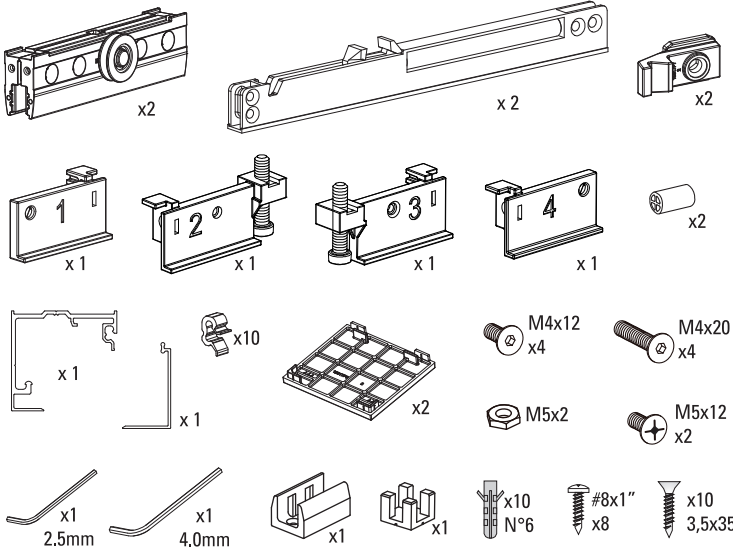
Kit corredera puerta Vidrio 60 kg

Vidrio templado
Tempered glass
Vidro temperado

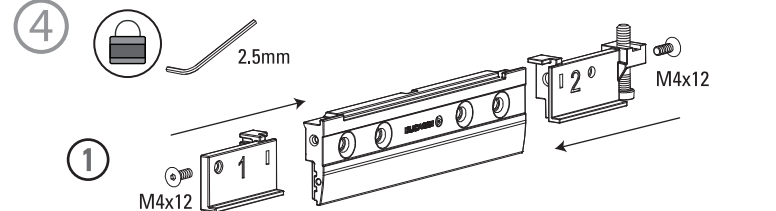
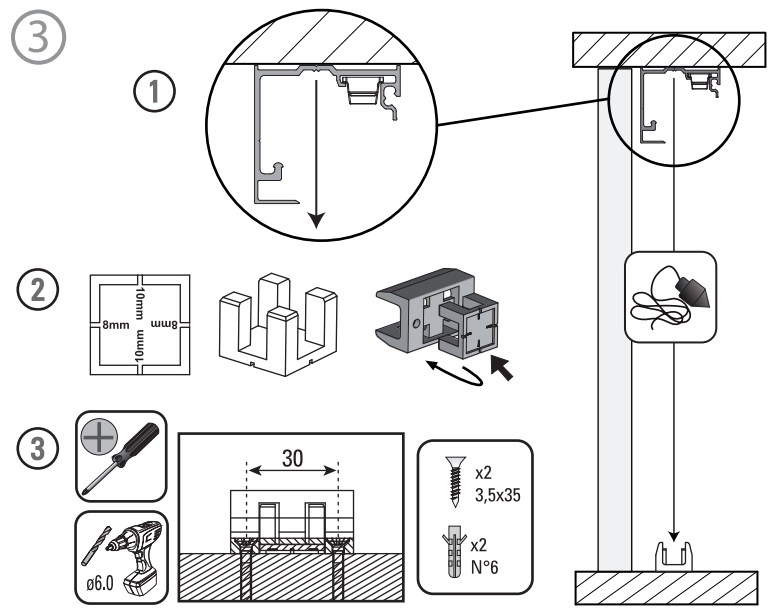
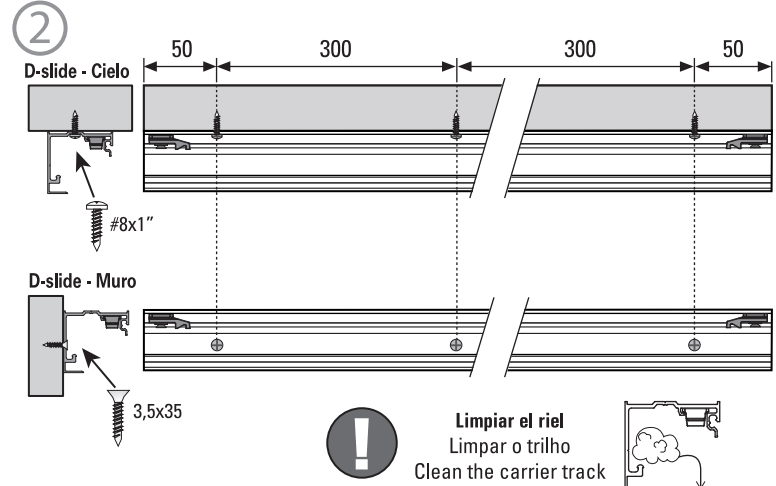
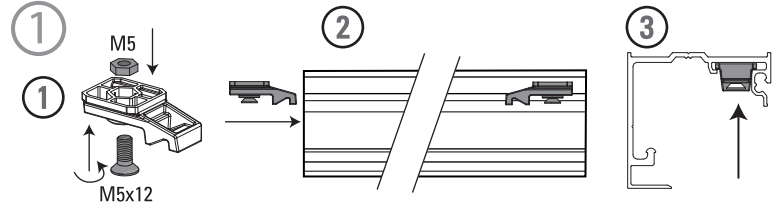
Kit para 1 hoja

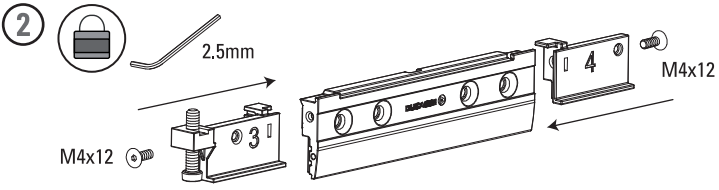
- 1x (40-60kg)**
88-132lbs
Peso puerta
Peso porta
Door weight
- 1**
Una puerta
Uma porta
One door
- 8-10mm**
5/16"-3/8"
Espesor Vidrio
Espessura Vidro
Glass Thickness
- 600-1200mm**
Ancho puerta
Largura porta
Door width
- 66**
63
Riel D-slide
Trilho D-slide
Track D-slide
- 52**
29
Cenefa D-slide
Sanefa D-slide
Fascia D-slide

COMPONENTES / COMPONENTES / COMPONENTS



$APF \geq (AP + 50)$ T1 (mín 50)



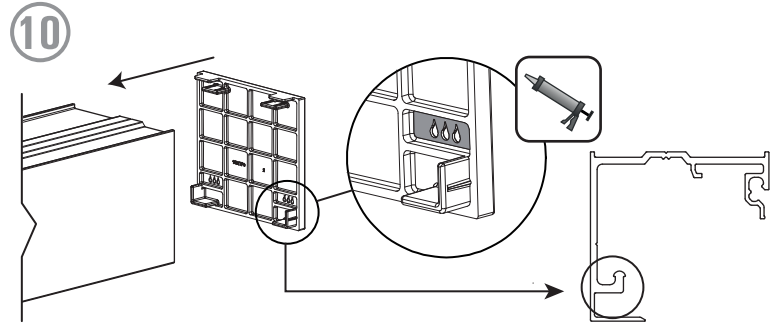
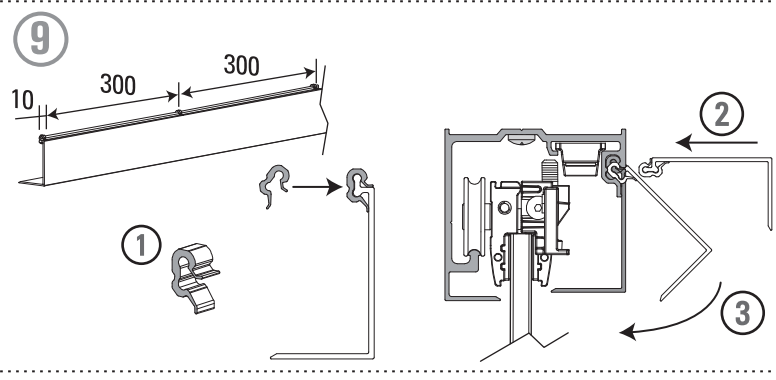
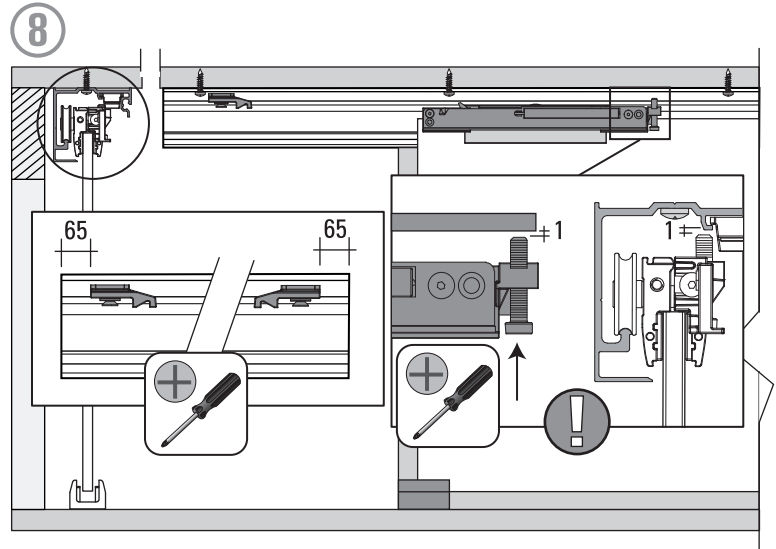
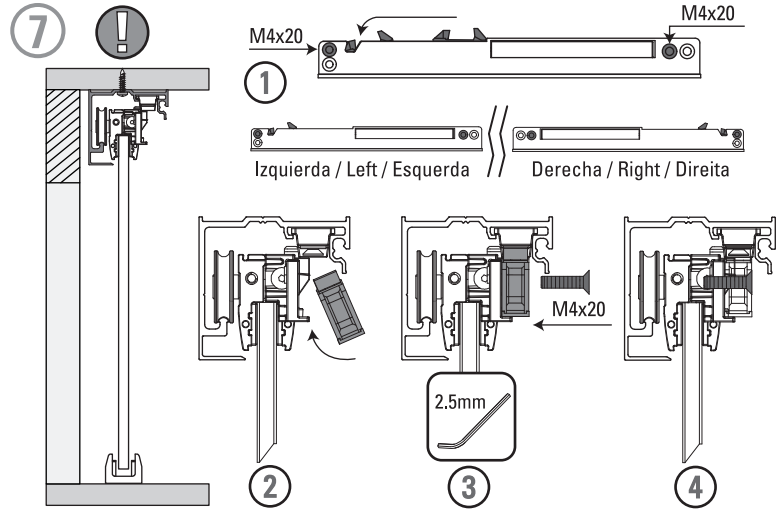
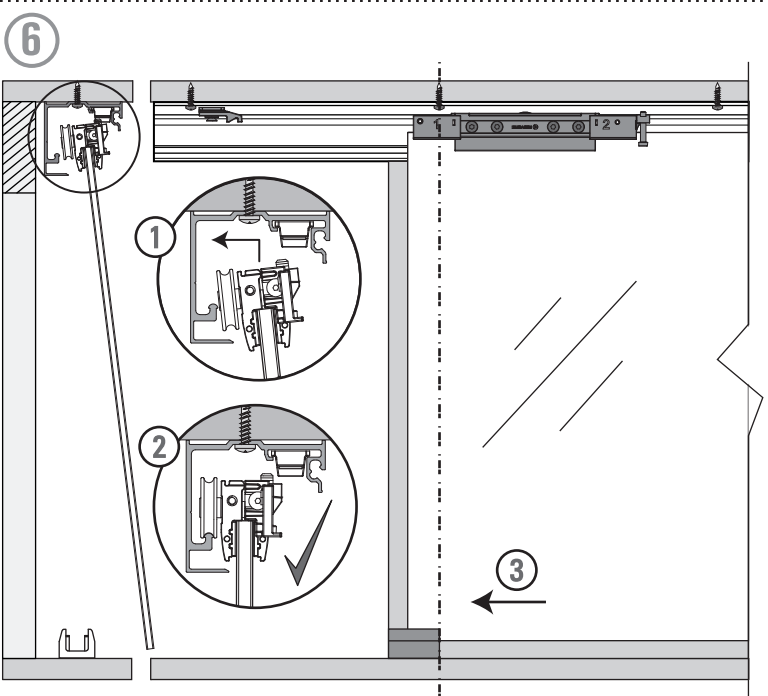
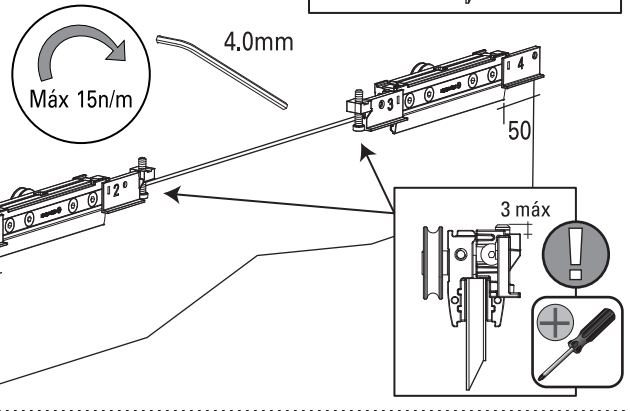
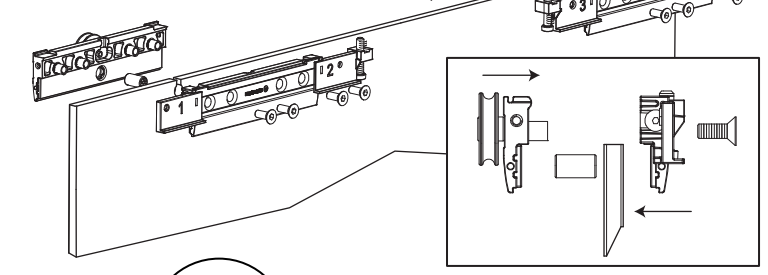
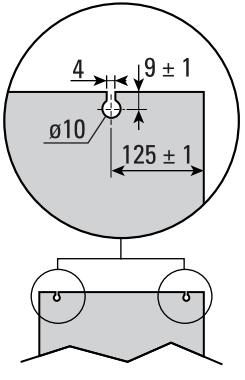


5 Mecanizado / Usinagem / Machining

- Es requisito perforar el cristal templado para la instalación del sistema en zonas de mucha humedad y calor.

- É requerido fazer os furos no vidro temperado para a instalação do sistema em áreas de elevada humidade e calor.

- It is required to drill tempered glass for installing the system in areas of high humidity and heat.



! Todas las medidas expresadas en milímetros. Todas as medidas estão em milímetros. All measurements in millimeters.

mm	Decimal inches	Aprox Fraction	mm	Decimal inches	Aprox Fraction
1	0.0394	3/64	6	0.2362	15/64
2	0.0787	5/64	7	0.2756	9/32
3	0.1181	1/8	8	0.3150	5/16
4	0.1575	5/32	9	0.3543	23/64
5	0.1969	13/64	10	0.3937	25/64

V22.08.18
OP

www.ducasseindustrial.com

DUCASSE INDUSTRIAL