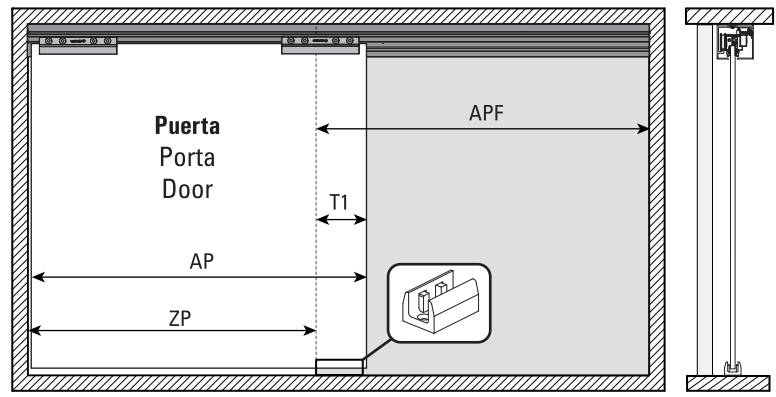
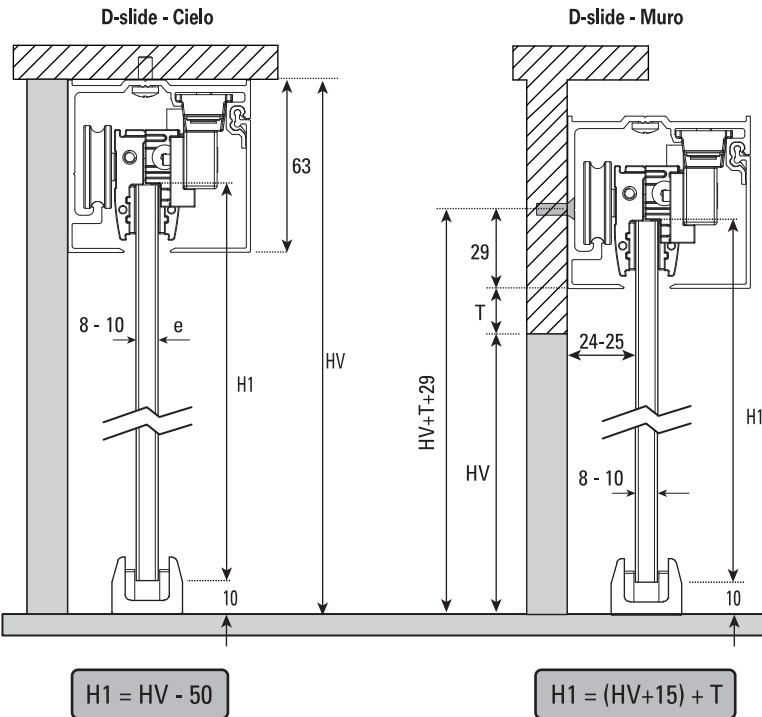
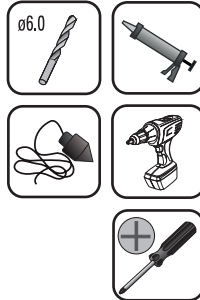
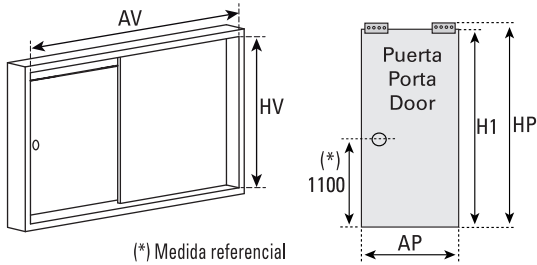


D-slide 80 / EasySoft 80

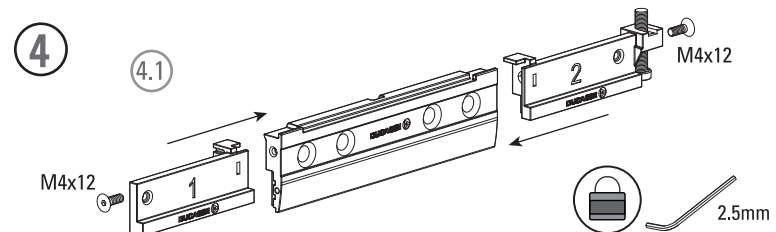
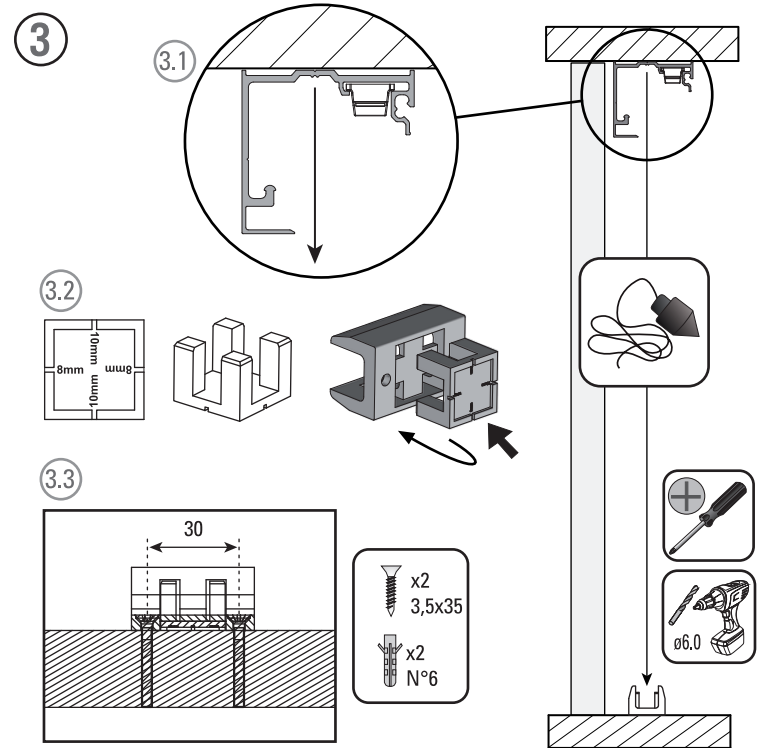
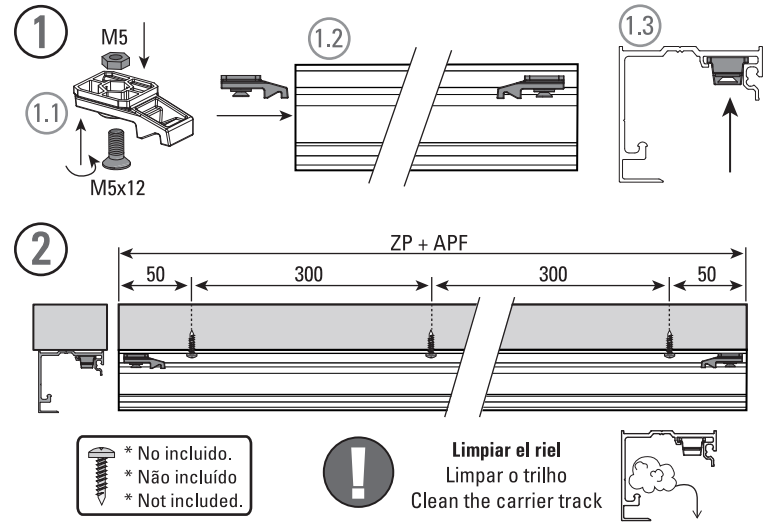
Kit para 1 hoja

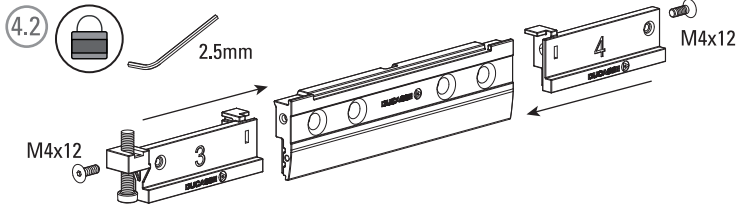
1x (60-80kg) 132-176lbs	1	8-10mm 5/16"-3/8"	600-1200mm	66	52
Peso puerta Peso porta Door weight	Una puerta Uma porta One door	Espesor Vidrio Espessura Vidro Glass Thickness	Ancho puerta Largura porta Door width	Riel D-slide Trilho D-slide Track D-slide	Cenefa D-slide Sanefa D-slide Fascia D-slide

COMPONENTES / COMPONENTES / COMPONENTS



$AP = ZP + T1$ $T1 \text{ (mín 50)}$ $APF \geq (AP + 50)$



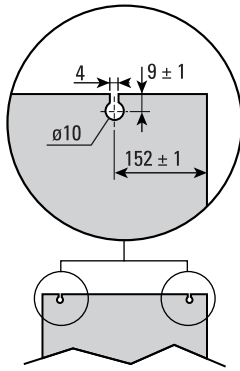


5 Mecanizado / Usinagem / Machining

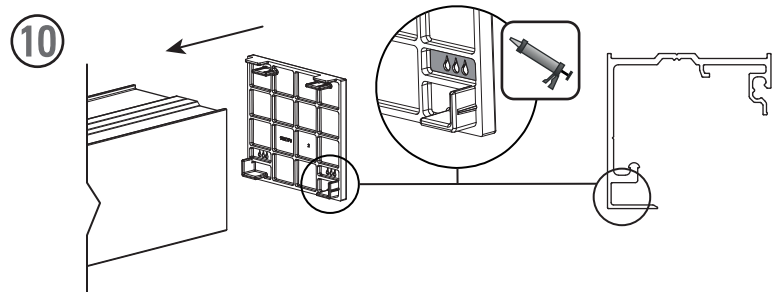
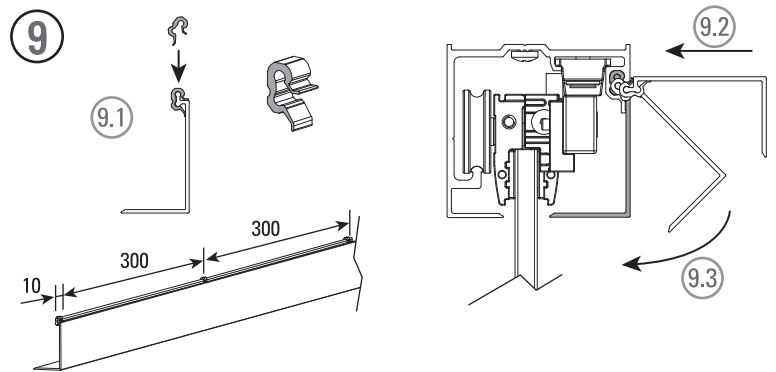
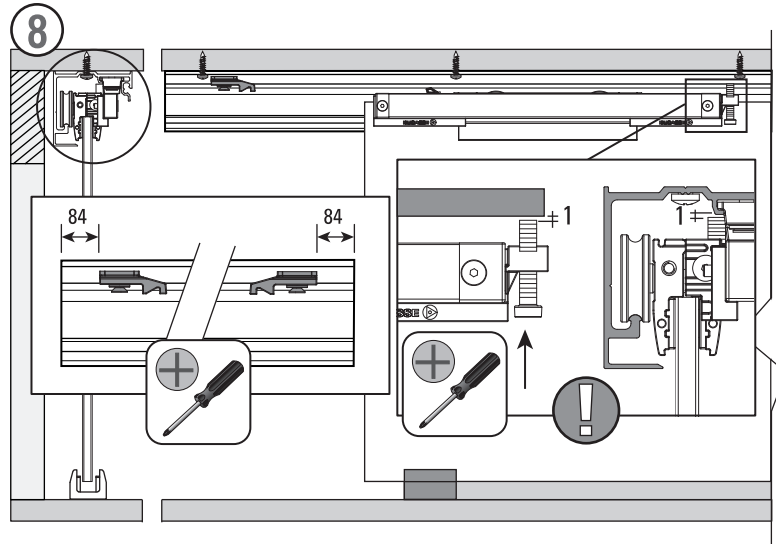
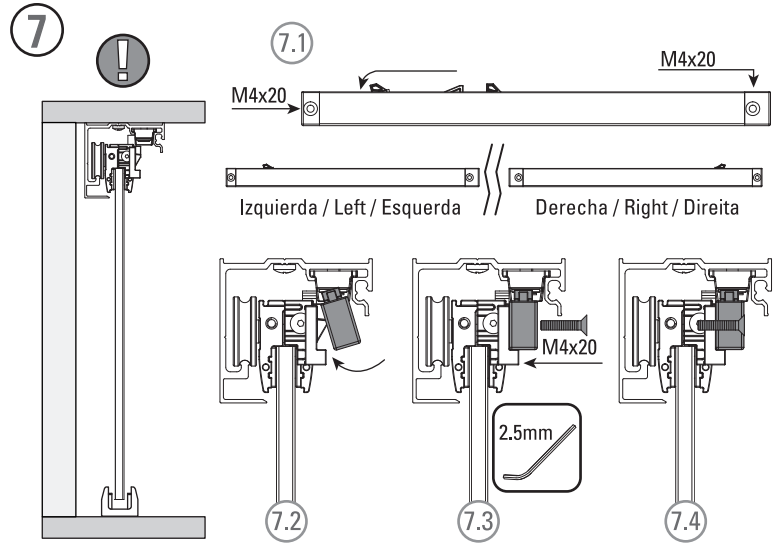
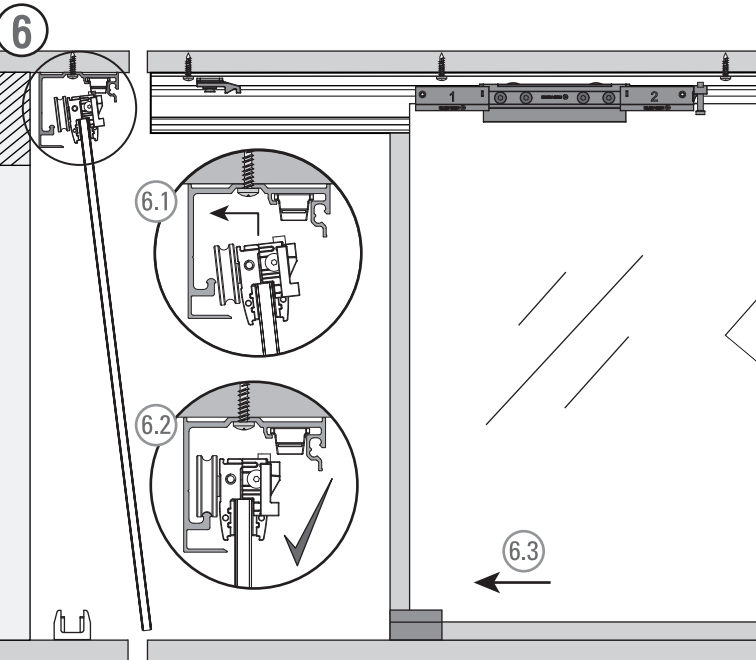
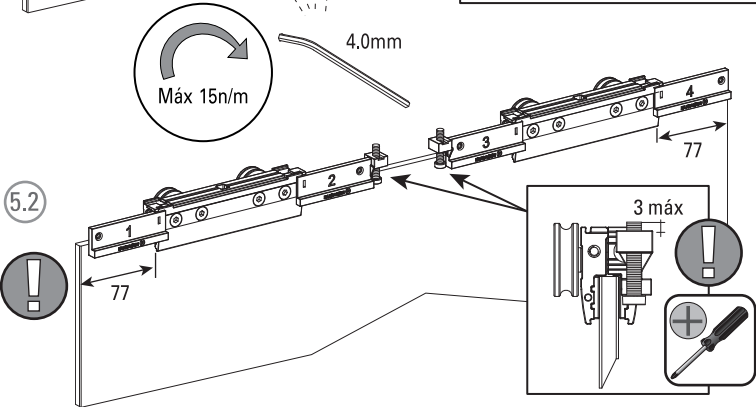
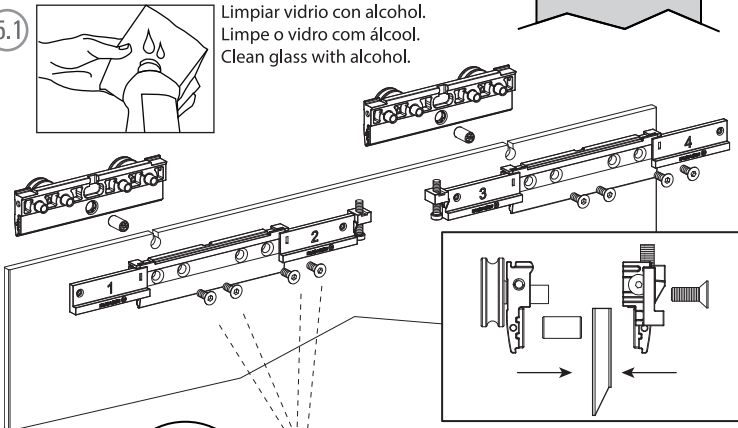
- Es requisito perforar el cristal templado para la instalación del sistema en zonas de mucha humedad y calor.

- É requerido fazer os furos no vidro temperado para a instalação do sistema em áreas de elevada humidade e calor.

- It is required to drill tempered glass for installing the system in areas of high humidity and heat.



5.1 Limpiar vidrio con alcohol.
Limpe o vidro com álcool.
Clean glass with alcohol.

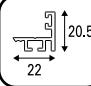
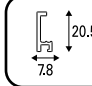
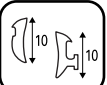
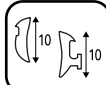
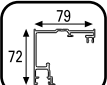
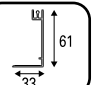
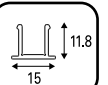


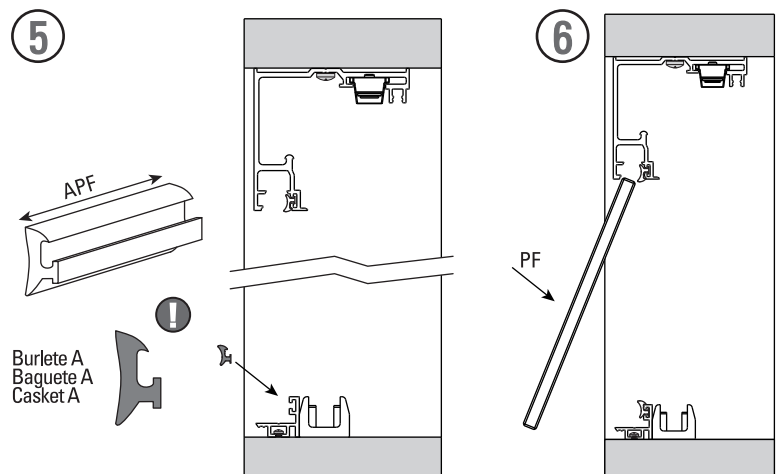
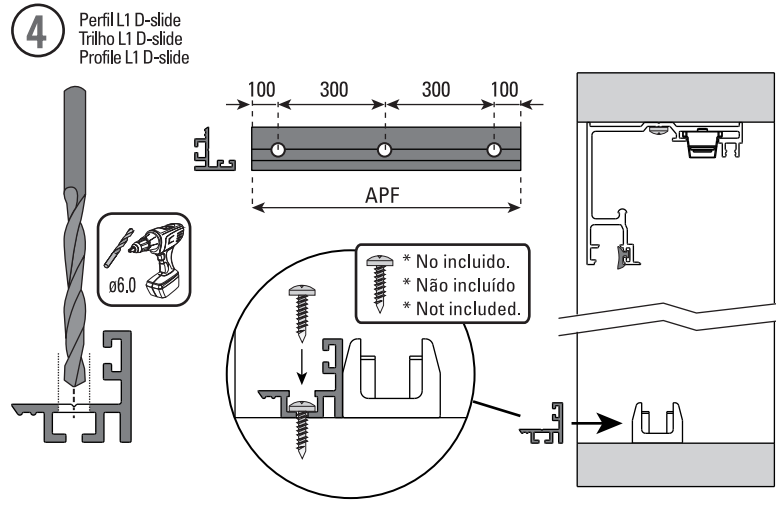
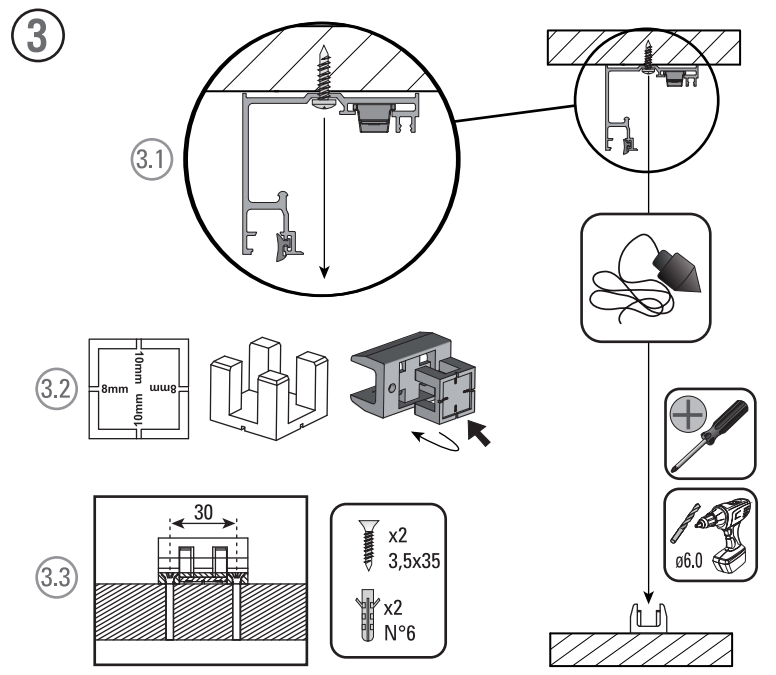
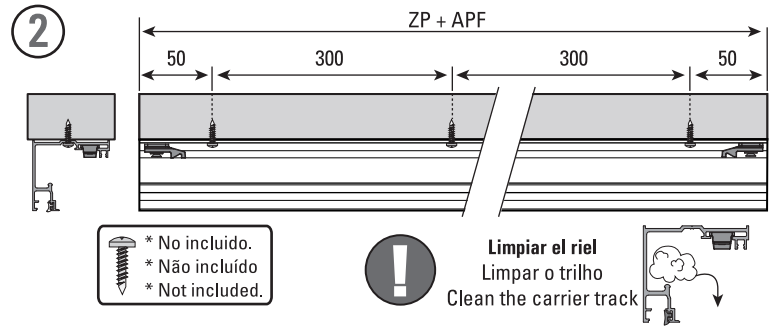
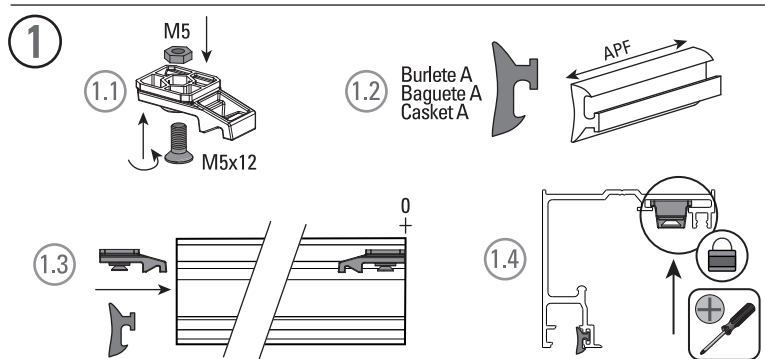
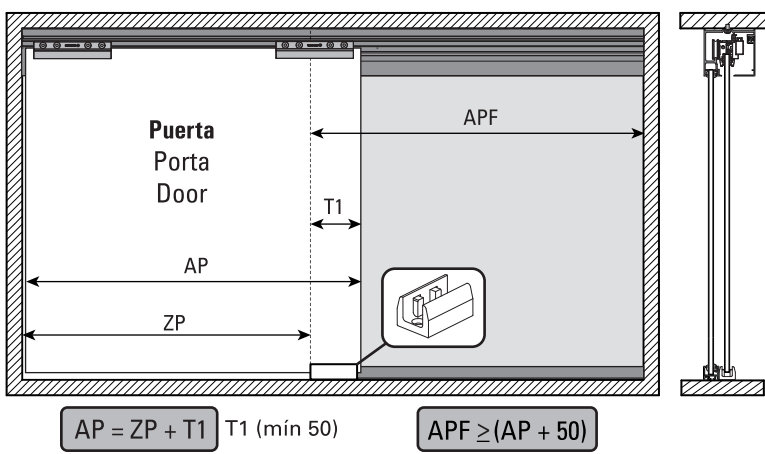
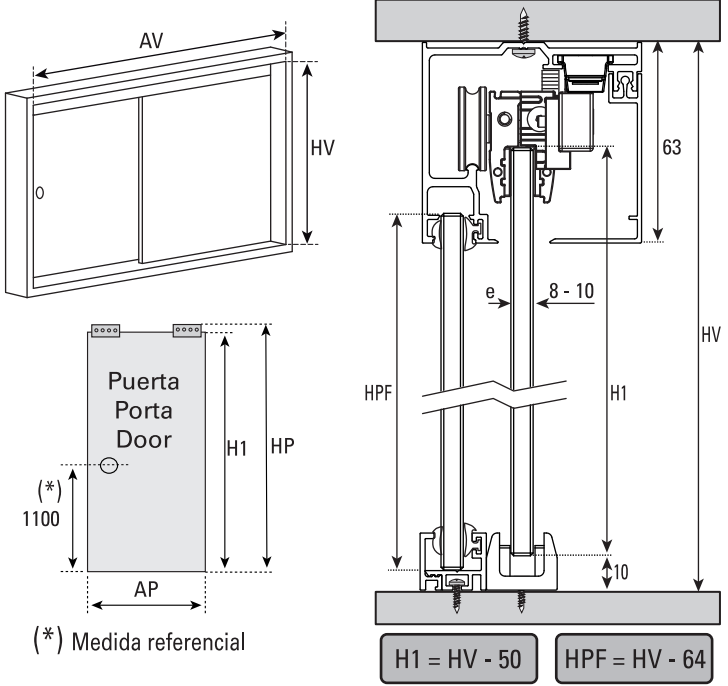
! Todas las medidas expresadas en milímetros.
Todas as medidas estão em milímetros.
All measurements in millimeters.

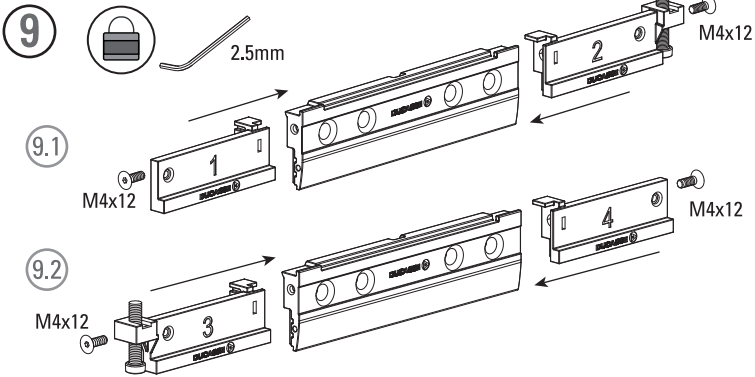
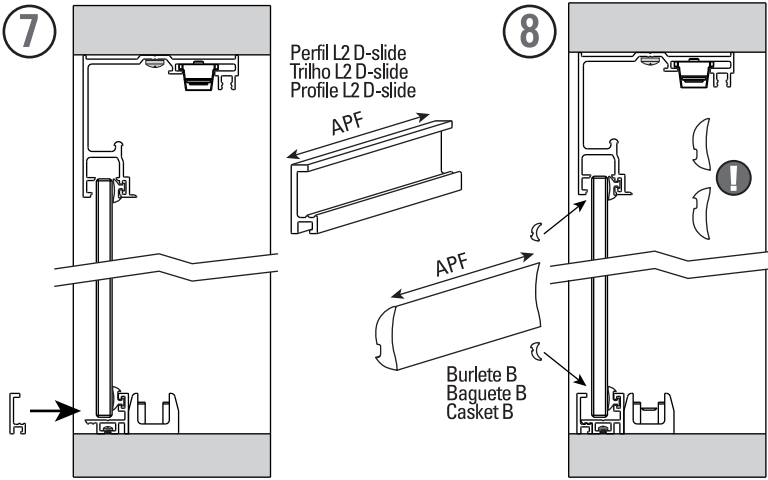
mm	Decimal inches	Aprox Fraction	mm	Decimal inches	Aprox Fraction
1	0.0394	3/64	6	0.2362	15/64
2	0.0787	5/64	7	0.2756	9/32
3	0.1181	1/8	8	0.3150	5/16
4	0.1575	5/32	9	0.3543	23/64
5	0.1969	13/64	10	0.3937	25/64

D-slide 80 PF / EasySoft 80

Vidrio templado
Tempered glass
Vidro temperado
Kit para 1 hoja

1x (60-80kg) 132-176lbs	1	8-10mm 5/16"-3/8"	600-1200mm		
Peso puerta Peso porta Door weight	Una puerta Uma porta One door	Espesor Vidrio Espessura Vidro Glass Thickness	Ancho puerta Largura porta Door width	Perfil L1 D-slide Trilho L1 D-slide Profile L1 D-slide	Perfil L2 D-slide Trilho L2 D-slide Profile L2 D-slide
					
Set Burlete VD 8mm Set Baguete VD 8mm Set Casket VD 8mm	Set Burlete VD 10mm Set Baguete VD 10mm Set Casket VD 10mm	Riel D-slide PF Trilho D-slide PF Track D-slide PF	Cenefa D-slide PF Sanefa D-slide PF Fascia D-slide PF	Tapa Riel D-slide PF Tampa Trilho D-slide PF Track D-slide PF end Cap	



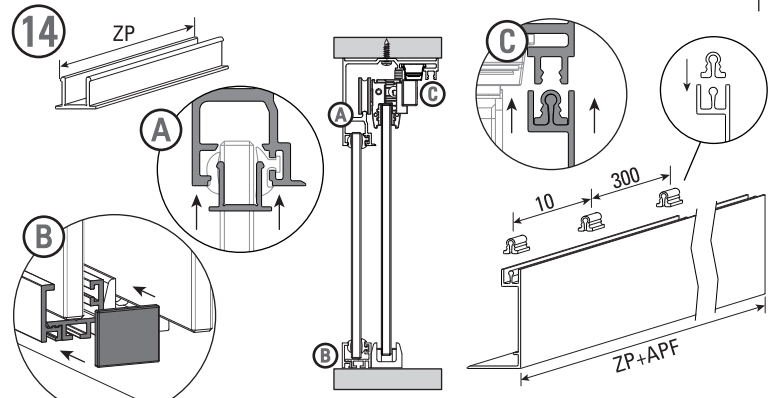
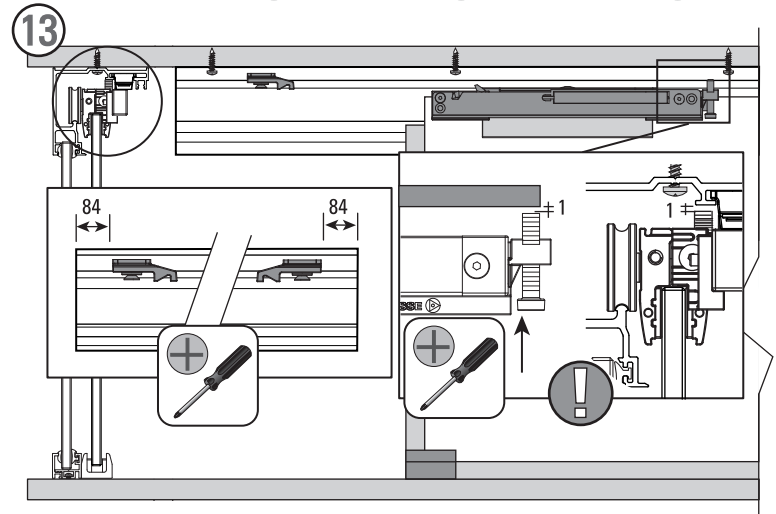
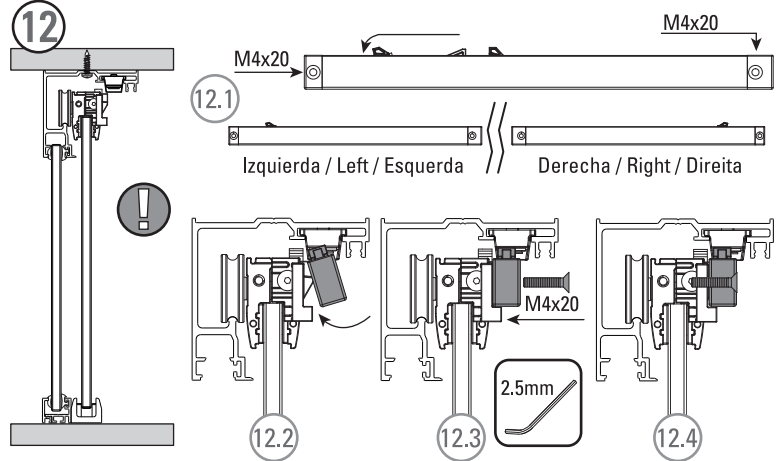
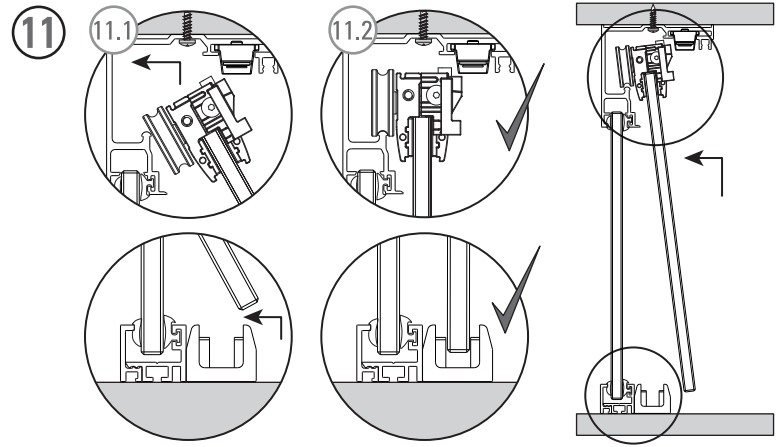
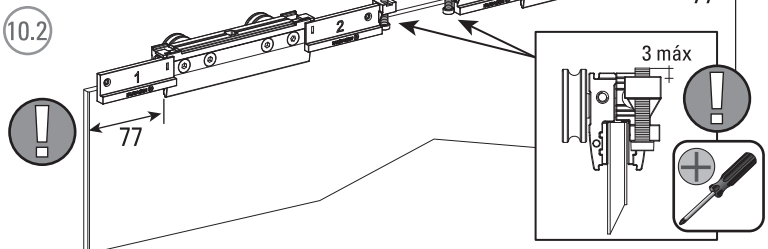
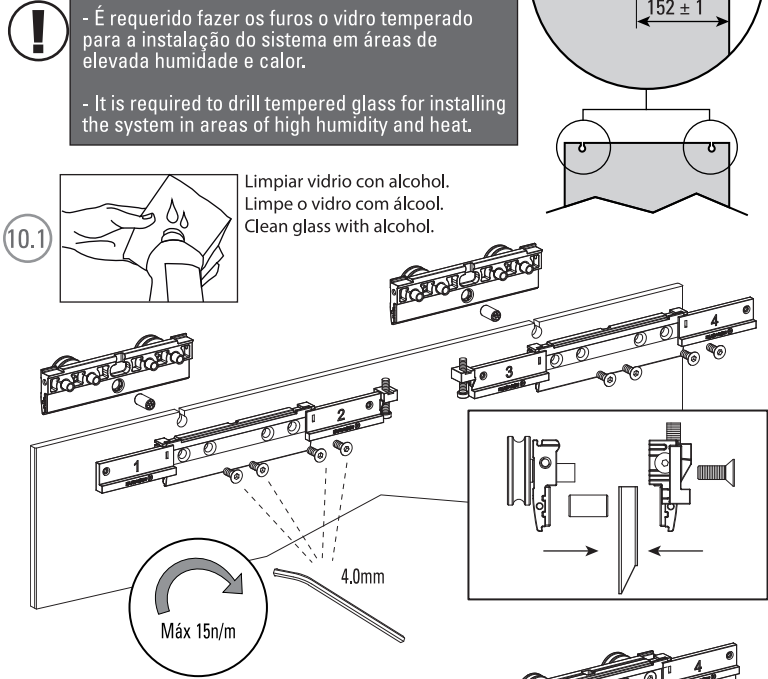
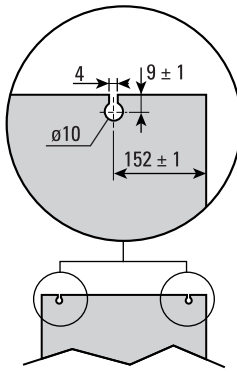


10 Mecanizado / Usinagem / Machining

- Es requisito perforar el cristal templado para la instalación del sistema en zonas de mucha humedad y calor.

- É requerido fazer os furos no vidro temperado para a instalação do sistema em áreas de elevada humidade e calor.

- It is required to drill tempered glass for installing the system in areas of high humidity and heat.



! Todas las medidas expresadas en milímetros
Todas as medidas estão em milímetros.
All measurements in millimeters.

mm	Decimal inches	Aprox Fraction	mm	Decimal inches	Aprox Fraction
1	0.0394	3/64	6	0.2362	15/64
2	0.0787	5/64	7	0.2756	9/32
3	0.1181	1/8	8	0.3150	5/16
4	0.1575	5/32	9	0.3543	23/64
5	0.1969	13/64	10	0.3937	25/64

V09.09.21

OP

www.ducasseindustrial.com

DUCASSE INDUSTRIAL