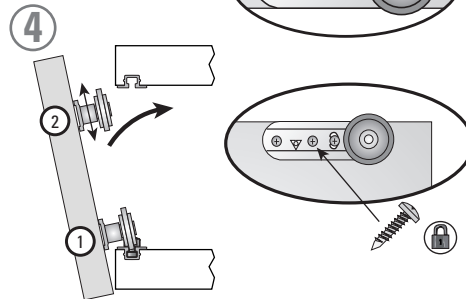
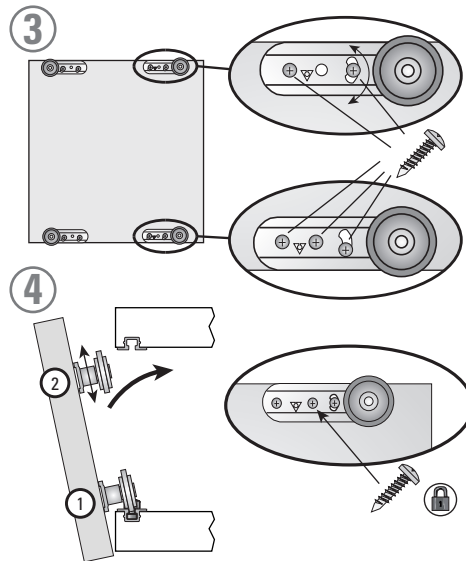
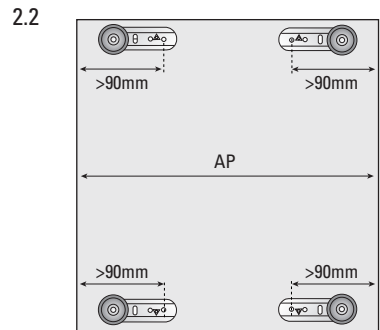
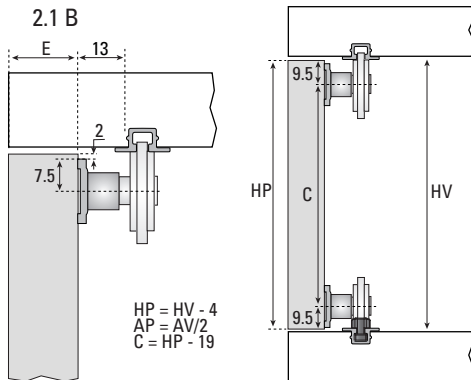
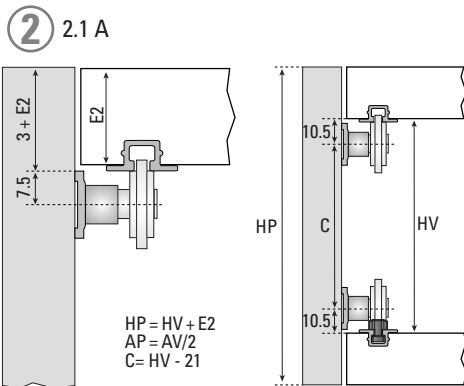
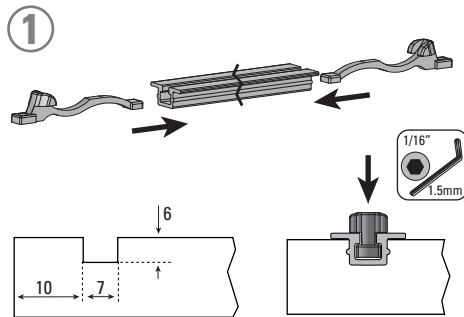
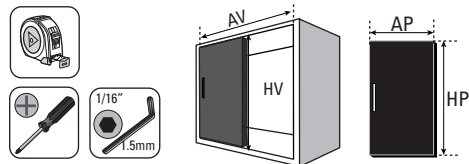
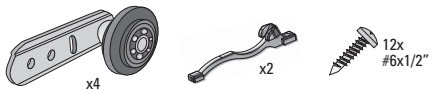


AL-1524

1x 15 kg
33 lbs
1
Una puerta / Uma porta / One doors
 15mm / 5/8"
Espesor Madera / Espessura Madeira / Wood Thickness
 500
Ancho mínimo / Largura mínima / Minimum width

14
Riel Embutido CX / Triho Embutido CX / Inlaid Carrier Track CX
 25mm

COMPONENTES / COMPONENTES / COMPONENTS



Todas las medidas expresadas en milímetros / Todas as medidas estão em milímetros. / All measurements in millimeters.

mm	Decimal inches	Aprox Fraction	mm	Decimal inches	Aprox Fraction
1	0.0394	3/64	6	0.2362	15/64
2	0.0787	5/64	7	0.2756	9/32
3	0.1181	1/8	8	0.3150	5/16
4	0.1575	5/32	9	0.3543	23/64
5	0.1969	13/64	10	0.3937	25/64